

The Accessible Cabins

Presented by New Horizons Un-limited 2018

Created by Bradley Strom, Troop 530

Accessible Cabins

- ▶ 2016 Potawatomi State Park
- ▶ 2015 Buckhorn State Park
- ▶ 2014 Harrington Beach State Park
- ▶ 2008 Kohler-Andrae State Park
- ▶ 2008 Richard Bong State Recreation Area
- ▶ 2004 High Cliff State Park
- ▶ 1993 Kettle Moraine State Forest - Ottawa Lake
- ▶ 1991 Mirror Lake State Park

Accessible Cabin Partners

- ▶ Originally - Telephone Pioneers of America
- ▶ Currently - Wisconsin State Park Friends Group
- ▶ Wisconsin Department of Natural Resources (DNR)
 - ▶ Cabin in the Woods initiative
- ▶ New Horizons Un-Limited
- ▶ Miller Engineering Information Technologies Group Inc.
- ▶ Strass Maguire and Associates

How are you helping?

“We find this opportunity to be an honor and a privilege. Stephanie is unable to write this as she is quadriplegic with no use of her legs and limited use of her arms. Steph wants everyone to know that she was able to turn on the [water] faucets by herself for the first time. What a thrill.”

-Julie, Mother of Stephanie

“Knowing this [wheelchair accessible] vacation spot exists helps me to look forward. It has changed my outlook on life.”

-N.M.

MIRROR Lake Accessible Cabin



HIGH Cliff Accessible Cabin



BONG Accessible Cabin



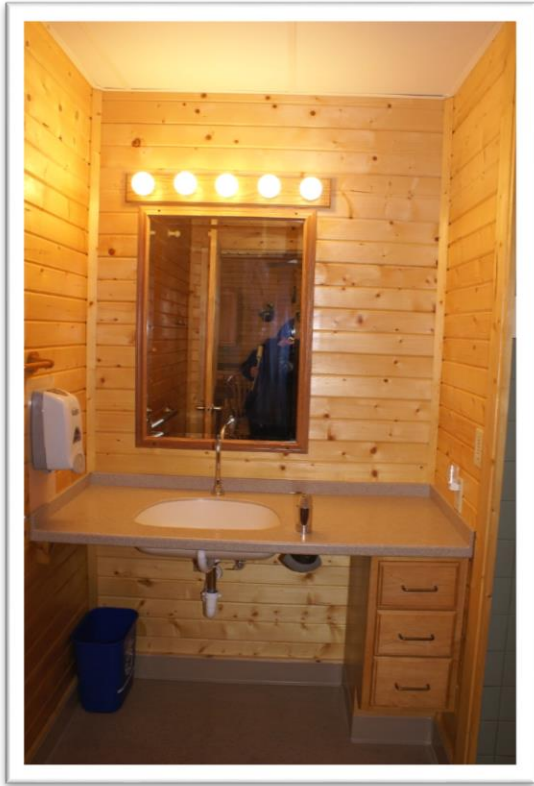
Kohler Andrae Accessible Cabin



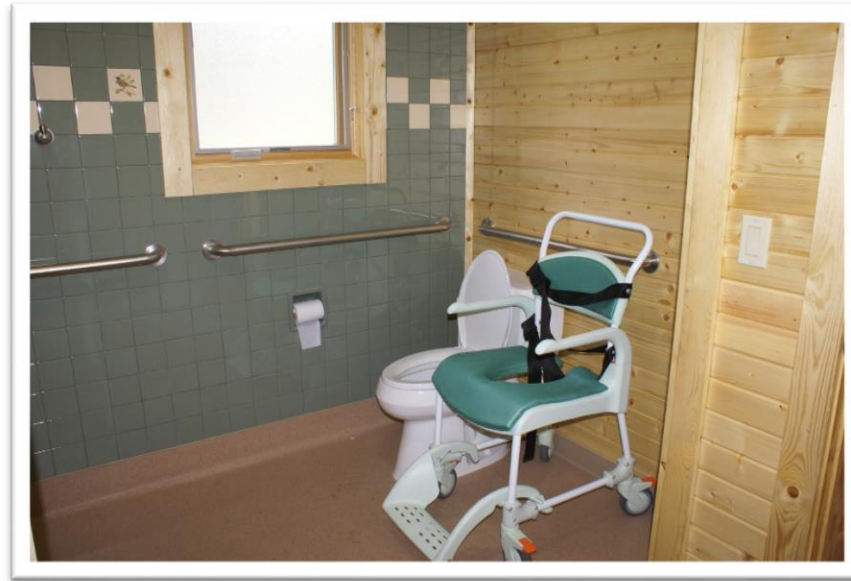
HARRINGTON Beach Accessible Cabin



The VERY Important Basics



Wheelchair Accessible
Lavatory



Wheelchair Accessible Bathroom



Roll In Shower

The VERY Important Basics



Easy Access Cabin Great Room



Open Concept Design with Easy
Access Bedroom next to
Bathroom



Wheelchair Easy Access Stove
and Sink in Kitchen

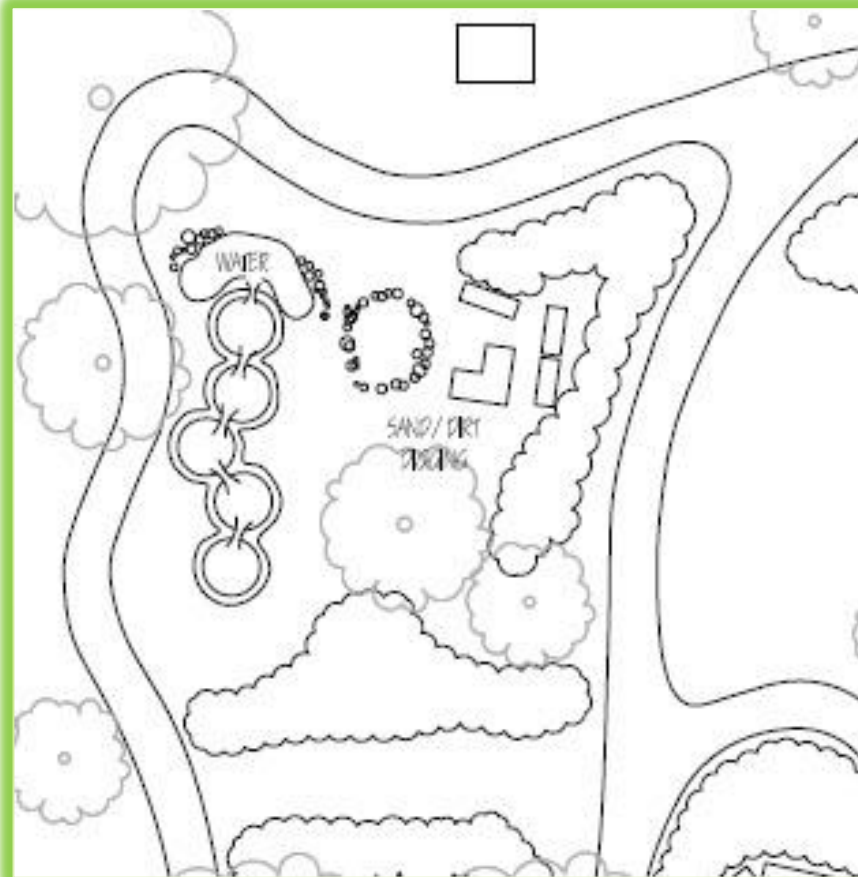
What's new... Nature Explore Classroom

- ▶ There are eleven “classroom” areas for movement and music, open play, dirt and sand digging, building, messy materials, climbing and crawling, water exploration and nature art.
- ▶ The area will be available to people of all ages, abilities and sensitivities.
- ▶ There is evidence that children’s mental and emotional health is enhanced through regular contact with the outdoors.

“When a child born today turns 30 they will have spent nearly 10 years of their life in front of a screen - watching life rather than living it.”

-Brian Gibbs

Bong Recreation Nature Explore - From Concept ...



Bong Recreation Nature Explore



Bong Recreation Nature Explore - To Breaking Ground...



“Tom Sawyer’s Fence”

“The original cabins have become “Tom Sawyer’s Fence” that others have taken on and expanded upon. It has been rewarding to see each group, led by people who had knowledge of disability, dream of expanding the vision of including people with disabilities in the outdoor experience.”

-Art Miller